

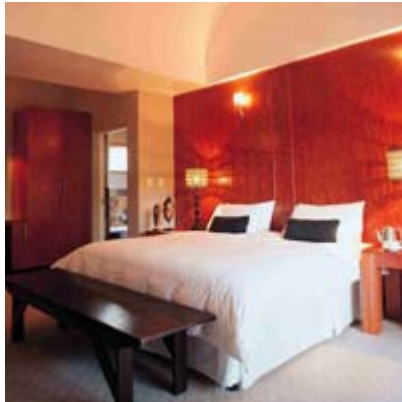


Live the Magic of Africa

FAMILY SAFARI ITINERARY **Featuring Kruger Safari, Victoria Falls & Okavango Delta**

“There is something about safari life that makes you forget all your sorrows and feel as if you had drunk half a bottle of champagne – bubbling all over with heartfelt gratitude for being alive”
KAREN BLIXEN – Out of Africa

Accommodations: Ten Bompas, Johannesburg
Tintswalo Safari Lodge, Kruger National Park
Victoria Falls Safari Lodge, Victoria Falls
Eagle Island Camp, Okavango Delta
Khwai Tented Camp, Khwai Concession



DAY 1 – Ten Bompas, Johannesburg

On arrival at Johannesburg airport you will be met outside customs & immigration by a representative from Ten Bompas.

After such a long journey, this will give you an opportunity to rest before starting your family safari trip of a lifetime.

Right in the centre of Sandton and Johannesburg, this owner-run boutique hotel really is offering something quite different. Only ten, individually designed suites but each with a huge amount of space, guests are looked after personally, in great comfort. Nothing is too much trouble for the friendly staff and anything can be arranged with the minimum of fuss.

There are so many little touches - the complimentary room bar, steam showers in the bathrooms, open fireplaces (already laid up and ready to go!) and a comprehensive directory of what's on where in Johannesburg - the perfect 'pied a terre'.

Overnight: **Ten Bompas Hotel**
www.tenbompas.com

Tuesday November 25th

DAY 2 – Tintswalo Safari Lodge, Kruger National Park

Today, your Hills of Africa guide will meet you and go through your travel documents with you in detail. She will hand over all vouchers. You will then be transferred to Johannesburg Airport where you will take a scheduled charter flight to Tintswalo. On arrival at Tintswalo Airstrip, you will be met by a guide and transferred to camp.

Tintswalo is an exclusive safari lodge, located along a seasonal river bed



Live the Magic of Africa



in the private Manyeleti Reserve, within the Greater Kruger National Park.

Tintswalo Main Lodge overlooks a waterhole frequented by elephant and other big game. The well appointed, air conditioned Tintswalo Explorer Suites are linked to the main lodge by raised walkways. Luxuries at the Explorer Suites include private outdoor showers, decks and plunge pools. The Baines Presidential Suite has two full suites joined by a spacious living area and open plan kitchen. One of the attractions of the Manyeleti Game Reserve is that there is minimal vehicle traffic. All of the Big Five may be spotted on your daily game drives and walking safaris in the Manyeleti. Star gazing, birding and cultural activities add to the adventure at Tintswalo.

Overnight: Tintswalo Safari Lodge

www.tintswalo.com



DAY 6 – Victoria Falls Safari Lodge, Victoria Falls

Today, you will take a private charter flight to Johannesburg Airport. On arrival, you will be met by your Hills of Africa guide who will help you to check in for your international flight to Victoria Falls. On arrival at Victoria Falls, you will be met by your Hills of Africa Guide who will transfer you to your hotel, **The Victoria Falls Safari Lodge**.

Set high on a natural plateau, the westward facing Victoria Falls Safari Lodge borders the Zambezi National Park and is just four kilometers from the thundering Victoria Falls, Southern Africa's foremost attraction.



Enjoying uninterrupted views of spectacular African sunsets and year round game at its on-site waterhole, the Lodge is ideally positioned to offer the most discerning traveler a taste of Africa at its best. Appointed in the utmost luxury, the Lodge offers outstanding hospitality together with an authentic wildlife experience.

Overnight: The Victoria Falls Safari Lodge

www.vfsl.com



DAY 7 – Victoria Falls Safari Lodge

Today your Hills of Africa guide will collect you and take you on a “Mists of Time” historical tour of Victoria Falls. You will explore the origins of the waterfall and the people who have lived in the land anointed by its mists. You will also visit Monde Village for a taste of how the people of Africa live their daily lives.

In the afternoon, we take you for an amazing adventure of Walking with the Lions.



Live the Magic of Africa

Overnight: The Victoria Falls Safari Lodge



DAY 8 – Eagle Island Camp, Okavango Delta

Today, you will be transferred to Victoria Falls Airport where you will take a light aircraft charter flight to Eagle Island Camp in the Okavango Delta.

Hidden from the world, deep within Botswana's Okavango Delta, is the paradise called Eagle Island Camp. Situated on the island of Xaxaba and surrounded by Illala Palms, the camp overlooks a surrounding lagoon fed by the tranquil waterways of the delta.

The 12 en-suite luxury tents set on raised wooden decks overlooking the lagoon. All luxury tents are housed on raised wooden platforms, offering great views, and shaded by a traditional African thatch roof. The large private decks are furnished with easy chairs and a hammock, ideal for viewing wildlife, or for enjoying a private dinner in complete privacy. The tent interiors are luxuriously appointed with such comforts as an en suite bathroom, private fully stocked mini bar, four poster bed complete with mosquito netting, as well as a discreet air conditioning.

Overnight: Eagle Island Camp

http://www.orient-express.com/web/ogam/ogam_c3a_introduction.jsp



DAY 10 – Khwai Tented Camp, Khwai Concession, Botswana

Today, you will be transferred by light aircraft charter to Khwai airstrip in the Khwai concession. Your private guide from African Bush Camps will meet you and transfer you to camp.

This provides the perfect setting of a wilderness area where a community lives in harmony with nature and wildlife. The magnificent Khwai river is the hub for some of the most outstanding wildlife viewing both on the Moremi and in the Khwai area. **Khwai Tented Camp** is a small 8 bedded tented camp situated along this life supporting river. It is designed for the luxury camping seeker who is looking for the real African experience in a simple and yet understated tented safari experience. The main focus is the wildlife experience including walking and excursions to the legendary Moremi game reserve. The style of the camp is in the East African Meru tentage, as the original explorers moved through the African wilderness. Activities on offer are game drives, walking and night excursions including cultural village outings to the old bushman village of Khwai.

Overnight: Khwai Tented Camp

www.africanbushcamps.com



Live the Magic of Africa

DAY 13 – Time to leave

Today, is your last day in Africa. Enjoy your final breakfast in camp and perhaps see elephant and giraffe.

Today, you will take a light aircraft charter flight to Victoria Falls Airport, where you will take a regional flight to Johannesburg. Here you will meet with your international flight home.

Safe travels and we hope you Lived the Magic of Africa.

Price – please email us to enquire about pricing. We would be delighted to prepare a trip of a lifetime for you. All itineraries are customized to your travel desires, pricing and availability will be considered when making an enquiry. We look forward to preparing you to Live the Magic of Africa.

Includes: -

- 1 nights bed & breakfast accommodation at Ten Bompas, Johannesburg
- 4 nights all inclusive accommodation at Tintswalo Safari Lodge
- 2 nights bed & breakfast accommodation at The Victoria Falls Safari Lodge
- 2 nights all inclusive accommodation at Eagle Island Camp
- 3 nights all inclusive accommodation at African Bush Camps Khwai Camp
- Road Transfers:
 - Road transfer from Johannesburg Airport to The Safari Club & return;
 - Road transfer from Victoria Falls Airport to Victoria Falls Safari Lodge & return
- Charter Air Flights:
 - Scheduled charter flight from Johannesburg to Tintswalo
 - Private charter flight from Tintswalo to Johannesburg
 - Light aircraft charter flight from Victoria Falls to Eagle Island Camp
 - Light aircraft charter flight from Eagle Island Camp to Khwai
 - Light aircraft charter flight from Khwai to Victoria Falls Airport
- Private Guiding Services:
 - Full day Victoria Falls Private Guided Tour
- Meet & Greet Services by HOA representatives
- Hills of Africa Travel detailed planning and itinerary services

All inclusive means: accommodation, meals, drinks & alcoholic beverages (except premium brands), laundry



Live the Magic of Africa

Includes: -

- International Air
- Zimbabwe Visa – currently USD35 per person – issued at point of entry
- Zimbabwe National Parks entrance fees at Victoria Falls - \$20 per person per day
- Meals not mentioned in itinerary
- Activities not mentioned in itinerary
- Items of a Personal nature
- Staff Gratuities
- Travel Insurance – quoted separately